

Command Center - Widget Library Updates

Command Center has changed the backend widget library that renders following dashboards:

1. Rooms Dashboard
2. Gateway for Microsoft Teams Dashboard
3. User Feedback Dashboard
4. Smart Meetings Dashboard

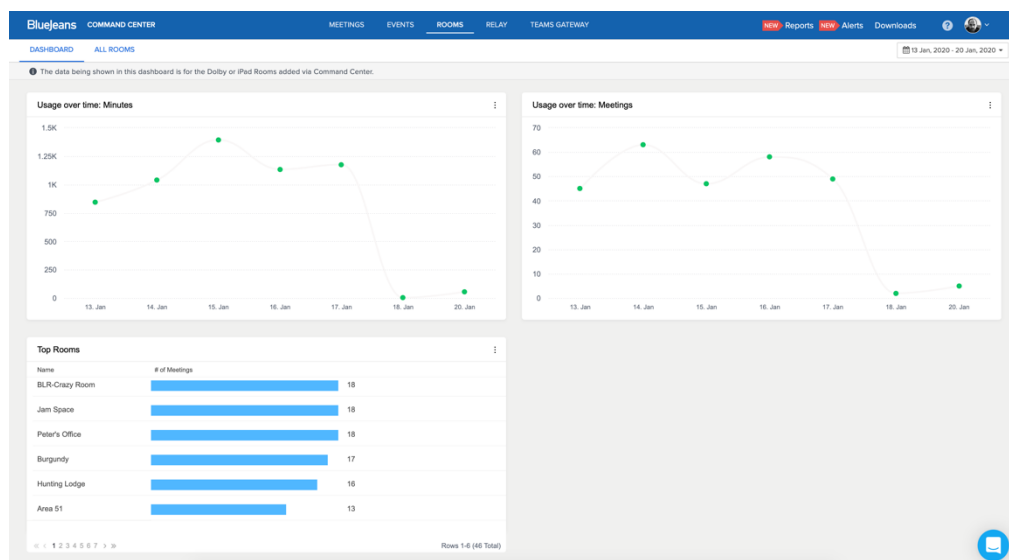
The actual look and feel of above dashboards will not change substantially. That said, users will now have access to additional features that include drill down capabilities, automatic date range conversions, list scrolling instead of paginated controls, and more. The changes are detailed below.

ROOMS DASHBOARD

This dashboard loads after clicking the **Rooms** tab.

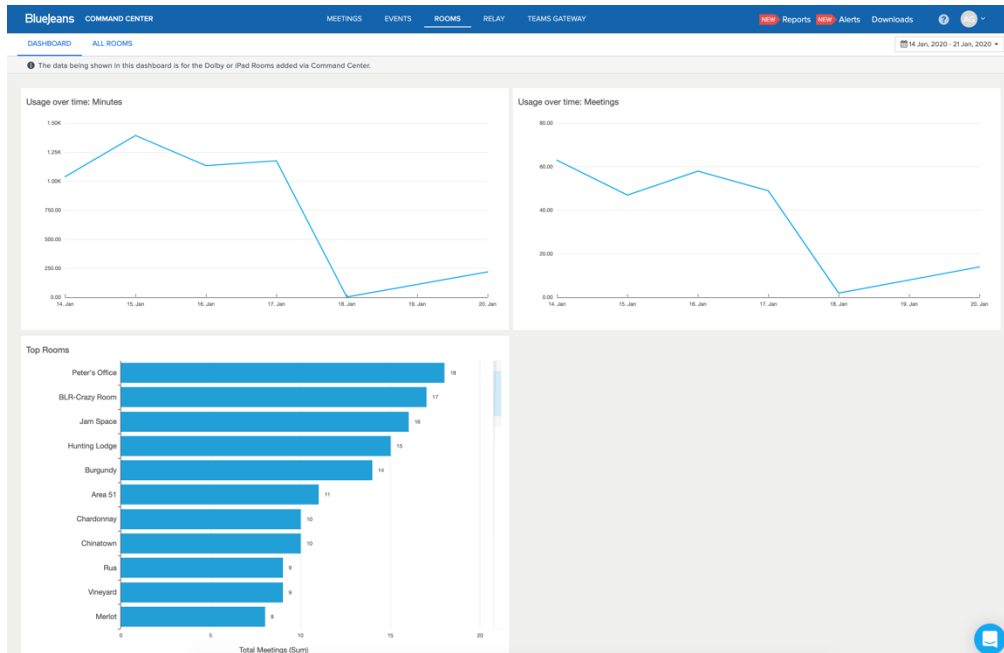
- The **Top Rooms** chart is now displays the top 10-12 rooms in the default view (as opposed to 6), and additional rooms are visible by scrolling (instead of clicking additional in-chart pages to view additional content).

Before
3/Feb



BlueJeans

After
3/Feb

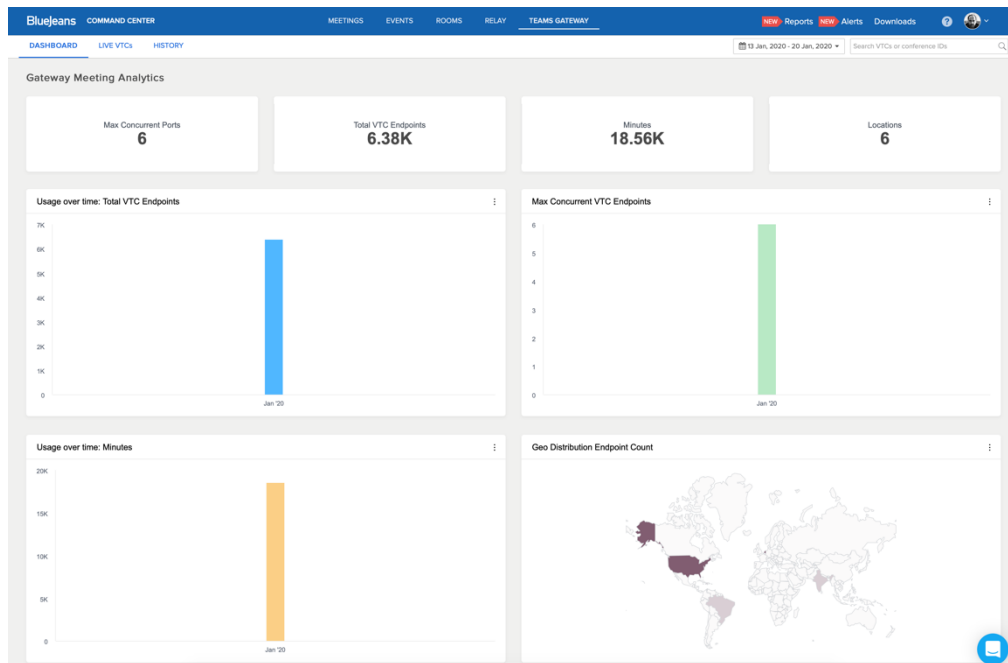


GATEWAY FOR MICROSOFT TEAMS DASHBOARD

This dashboard loads after clicking the **Teams Gateway** tab.

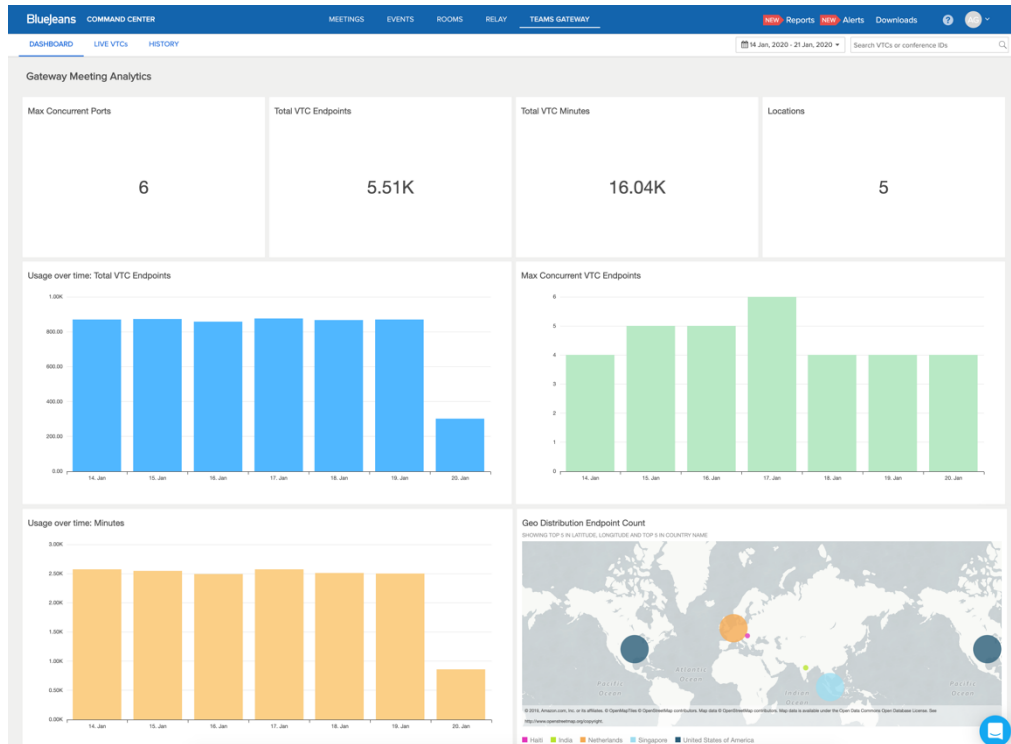
- Bar charts now display data on a **per day basis** (instead of per month) as the default, with additional options to aggregate data at week/month level.
- **Visual image** of the **Geo-Distribution** chart had changed marginally.

Before
3/Feb



Bluejeans

After
3/Feb

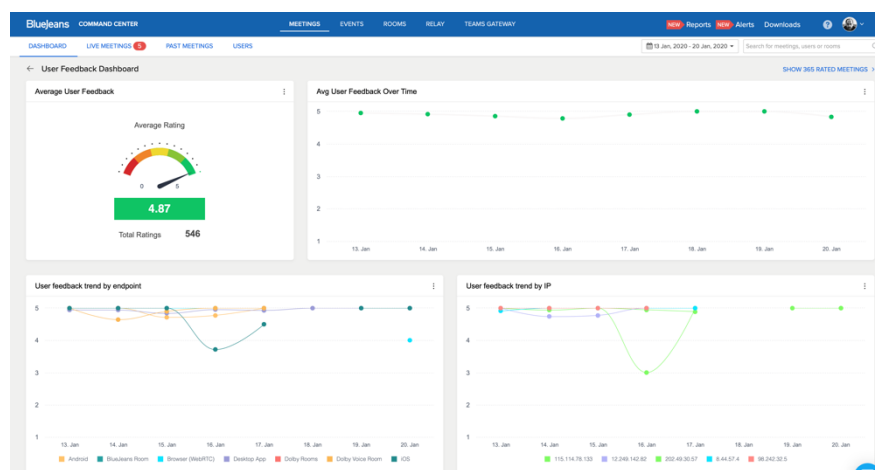


USER FEEDBACK DASHBOARD

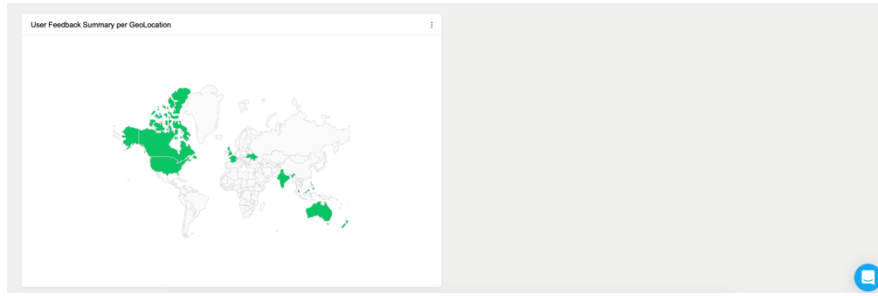
This dashboard loads after clicking on **Trends & Analytics** from the **Feedback Summary** widget.

- The visual images for the **Average Rating Chart**, **Line Charts** and the **Geo-distribution Charts** have been transformed, while keeping the feature functionality intact.

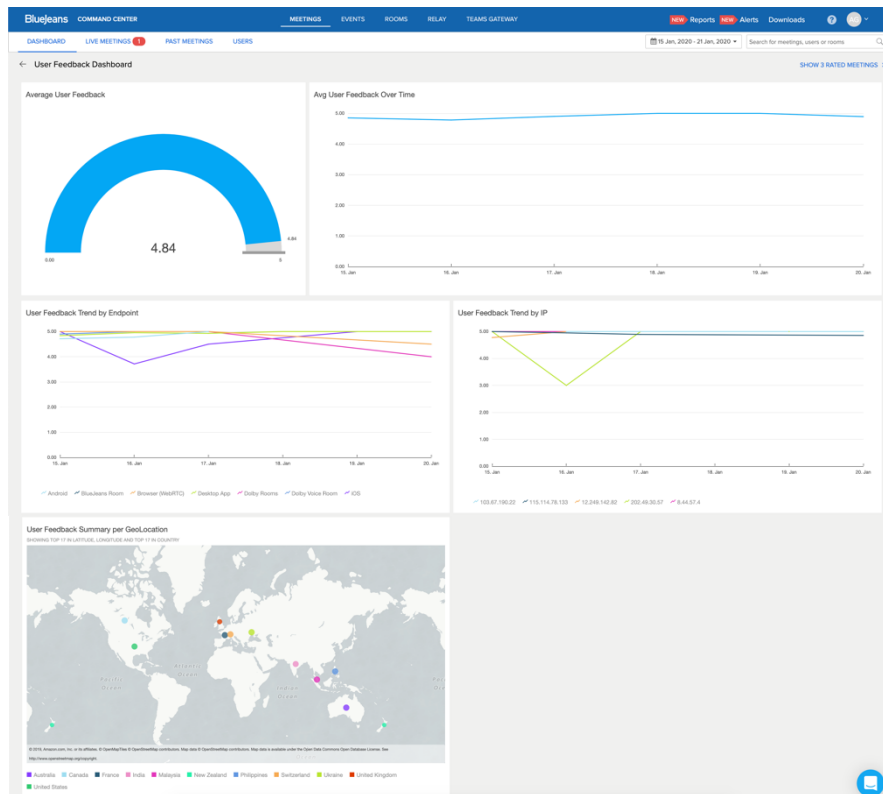
Before
3/Feb



BlueJeans



After
3/Feb

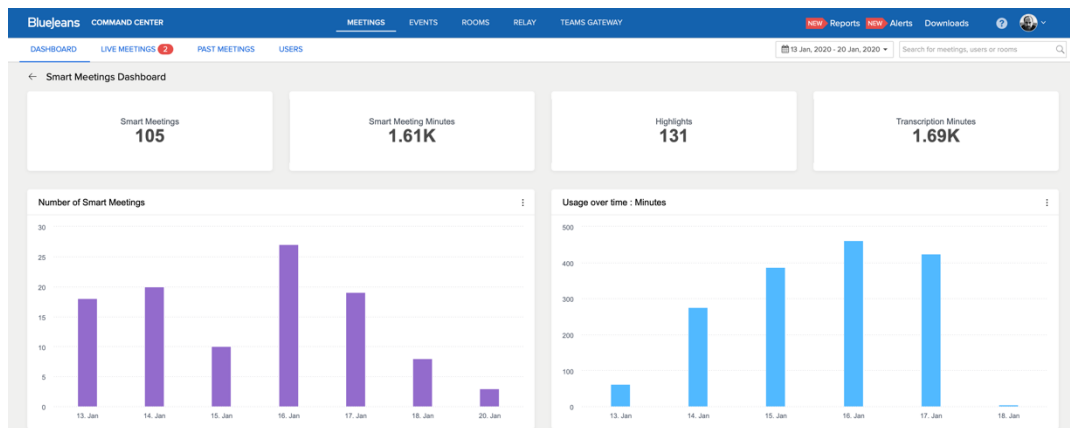


SMART MEETINGS DASHBOARD

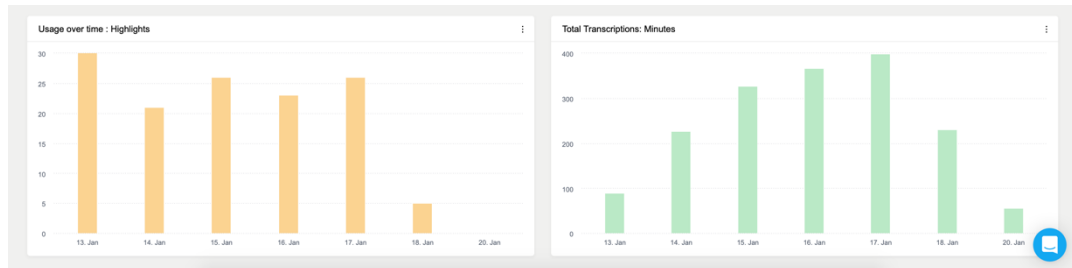
This dashboard displays after clicking **Trends & Analytics** from the **Smart Meetings** widget.

- The visual image of the charts have minor changes.

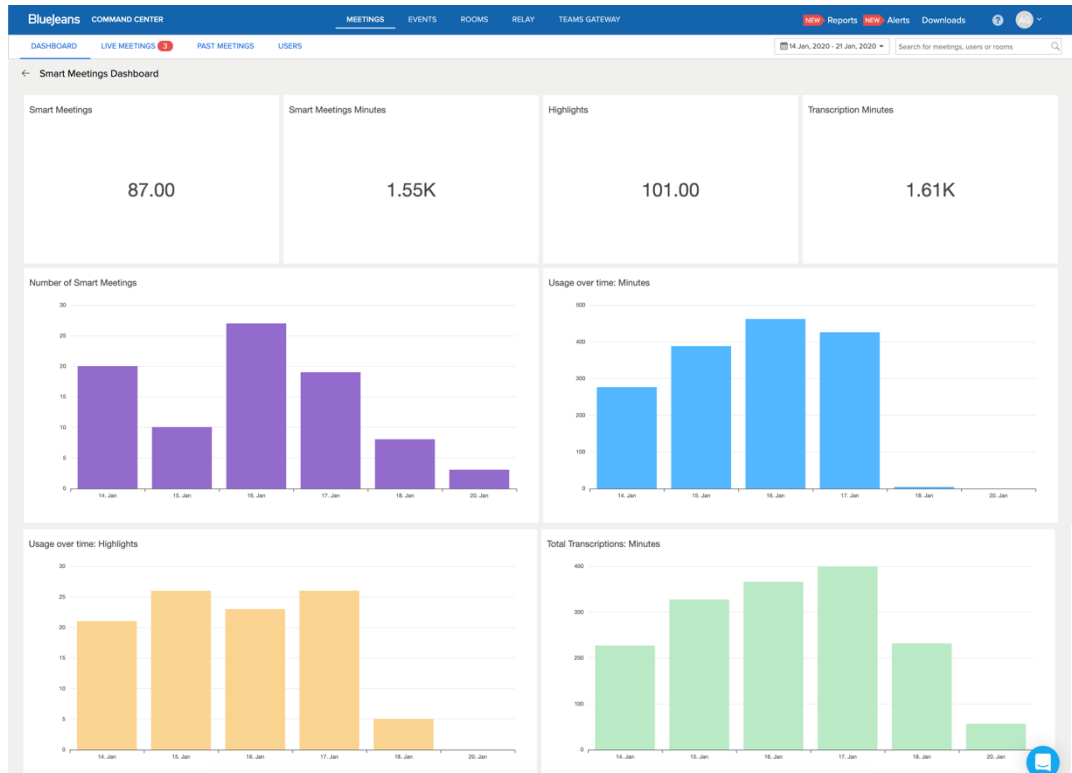
Before
3/Feb



Bluejeans



After
3/Feb



NEW WIDGET FEATURES

The following are known limitations with new widget library:

- **Changing the date range to more than 7 days:** widgets depicting line graphs now automatically adjust the dates on widget, and provides a scroll to visualize range of user's choice.
- **Downloading data represented on charts:** A downward arrow appears on top right corner of the widget after clicking on the desired chart.